

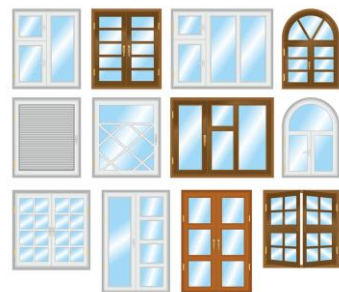
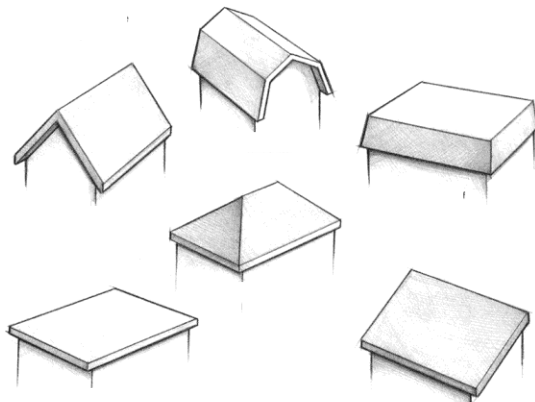
Name: \_\_\_\_\_

Class Period: \_\_\_\_\_

## Interior Design II

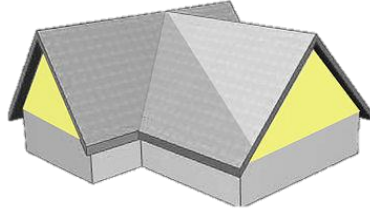
### Unit 2

### Roof, Window, & Door Styles

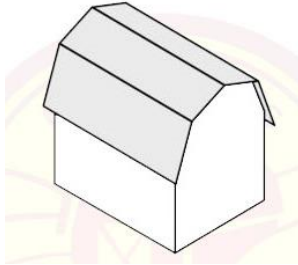


## Roof Styles

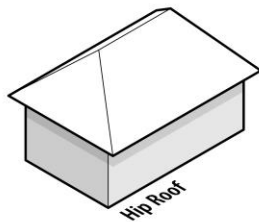
\_\_\_\_\_ - a roof with sloping sides and a gable at each end.



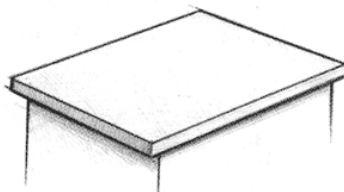
\_\_\_\_\_ - a gable roof with two slopes on each side and the lower slope being steeper.



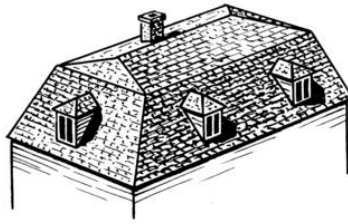
\_\_\_\_\_ - a roof with sloping ends and sloping sides.



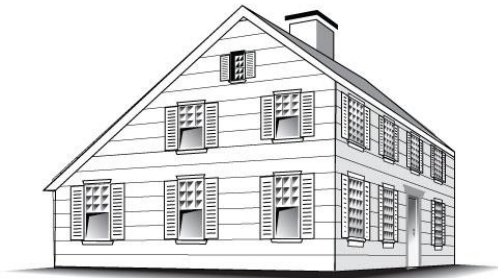
\_\_\_\_\_ - a roof that is horizontal or nearly horizontal.



\_\_\_\_\_ - a hipped roof with two pitches, the bottom pitch being very steep and the top pitch flatter, so it is usually not seen from the ground.



\_\_\_\_\_ - a gabled roof with one slop that is longer and lower than the other.



\_\_\_\_\_ - a roof with a single slope.



[MyOutdoorPlans.com](http://MyOutdoorPlans.com)

## **Window Styles**

\_\_\_\_\_ - a side hinged window that swings in or out.



\_\_\_\_\_ - a sash window where both sections are operable.



\_\_\_\_\_ - a window that projects from the attic.



\_\_\_\_\_ - a large window consisting of one pane of glass.



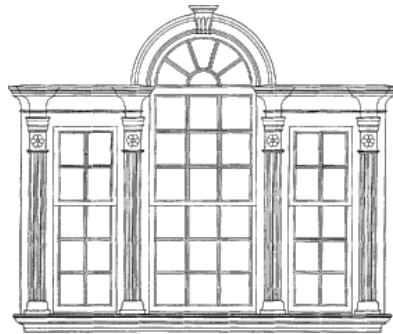
\_\_\_\_\_ - a window built to project outward from an outside wall in a square or rectangular configuration.



\_\_\_\_\_ - a curved projecting window.



\_\_\_\_\_ - a fan/half rounded window centered above three rectangular windows.



\_\_\_\_\_ - a window set into the roof and ceiling.



\_\_\_\_\_ - a half circle shaped window usually placed above a door or in a pediment.



\_\_\_\_\_ - a vertical, narrow row of windows used on one or both sides of a door.



\_\_\_\_\_ - a window that slides horizontally.



### **Door Styles**

\_\_\_\_\_ - a hinged, single entrance into a building or room.



\_\_\_\_\_ - a double casement type door that opens in or out with glass panes throughout its length.



\_\_\_\_\_ - a door that opens by sliding instead of swinging on a hinge.



\_\_\_\_\_ - a door with vertical double panels that folds back against itself; frequently used for closet door.



\_\_\_\_\_ - a door that slides into a compartment in the adjoin wall.

